

***NHS Research & Development  
North West  
Annual Report 2013/14***



## ***NHS R&D NW Annual Report 2013/14***

### **Report Contents**

<b>Director's Summary</b>	<b>Page 1</b>
<b>The NHS R&amp;D NW Team</b>	<b>Page 2</b>
<b>The Releasing Potential Programme</b>	<b>Page 3</b>
<b>The Catalyst Programme</b>	<b>Page 4</b>
<b>Let's Talk Research</b>	<b>Page 5</b>
<b>European Work</b>	<b>Page 5</b>
<b>Creative Learning Incubator</b>	<b>Page 6</b>
<b>Communications</b>	<b>Page 6</b>
<b>NW People in Research Forum</b>	<b>Page 7</b>
<b>Looking Forward</b>	<b>Page 9</b>
<b>Summary</b>	<b>Page 11</b>



## Director's Summary



*"Our work on Capacity, Connection and Collaboration is a key component in the delivery of a health service with a strong culture of research and innovation."*

As with many NHS organisations, 2013/14 has been a year of incredible change for the NHS Research and Development Team (NHS R&D NW). With the closure of the North West Strategic Health Authority in March 2013, NHS R&D NW became a devolved regional function hosted by Salford Royal NHS Foundation Trust and moved to the 11<sup>th</sup> floor of 3 Piccadilly Place, Manchester. We continue to develop our existing programmes of work like Releasing Potential and Catalyst programmes which have been highly rated and evaluated over the last few years. We have also delivered new and innovative ideas such as 'Let's Talk Research'. The North West People in Research Forum, which we host, continues to build its reputation as an model of excellence for public involvement in research across the region.

There have been some challenges in negotiating the new and often unformed NHS landscape over the last 12 months. In spite of this, we have metamorphosed from a small function in a very large organisation, to a much more independent and entrepreneurial team that has fully embraced the new innovative ethos of the NHS.

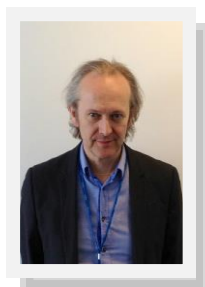
This report details our journey through the year and shares our many highlights and fruitful outcomes that provide the platform for next year's work programme. We have worked with people from every NHS Trust in the region and many of the universities, and we continue to ensure that our work contributes to sustainable change. Our work on Capacity, Connection and Collaboration is a key component in the delivery of a health service with a strong culture of research and innovation. We have a national and international reputation for working in strongly participative ways to ensure high impact.

Our thanks go to our hosts Salford Royal NHS Foundation Trust and the senior management team who supported us through the change process and to Health Education North West who continue to be our key stakeholder and a principal funder of our work.



**Dr Stuart Eglin**  
Regional Director, NHS R&D North West

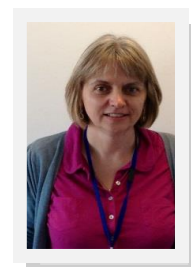




Dr Stuart Eglin  
Regional Director



Gillian Southgate  
Assistant Director



Dr Lynne Goodacre  
Assistant Director

## The NHS R&D North West Team

### *Team Values:*

*Integrity, Co-creation, Inclusivity, Altruism, Humility & Optimism*

### *Our Approach*

The team contributes an established and evaluated track record focusing specifically on: -

- Building R&D capacity throughout the full range of NHS organisations
- Making and supporting connections across the boundaries of organisations and existing networks
- Working collaboratively to facilitate the generation of ideas and research questions across multiple networks
- Building the profile of patient and public involvement in R&D

The Team has experience in research and development, NHS clinical services, the voluntary sector and academia. Stuart and Gillian hold honorary appointments at the universities of Liverpool and Salford, respectively.

The skills and expertise of the team are complimented by those of the associates with whom we work. Drawing on expertise from fields of leadership, organisational development, workshop facilitation, psychology, coaching and mentorship, the creative arts, knowledge and information management and research. Many of the programmes we develop are co-delivered with our associates ensuring that we bring a breadth of expertise to all that we do.

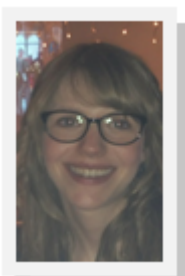
Jo-Anne Simpson  
Operational Manager  
& Executive Assistant



Leanne Gregory  
Project Administrator



Anna Pascalle Flint  
NW People in Research  
Forum Administrator



Melanie Chapman  
NW People in Research  
Forum Facilitator



Principle 3 of the NHS constitution states that: The NHS aspires to the highest standards of excellence and professionalism ..... through its commitment to innovation and to the promotion, conduct and use of research to improve the current and future health and care of the population. DH 2013

### ***The Releasing Potential Programme (RPP)***

The RPP supports the delivery of this commitment through the development of a culture of research and innovation (R&I) within the NHS that is sustained by a workforce with the requisite skills and expertise. Reflecting an evidence based approach to capability building this is achieved at a personal and organisation level through supporting the career development of NHS based early career researchers and working with managers and clinical team leads.

Over the last 12 months we have made significant progress in establishing communities of NHS based researchers, developing skills and expertise and consolidating our networks with the NHS, HEIs, and organisations comprising the research infrastructure in the region.

**Personal development:** Activities have included a workshop focussed on '*Attaining your research goals*' facilitated by Damian Hughes, founder of Liquid Thinker, which drew on the techniques used by great leaders and achievers to attain their goals. The pilot of a Peer 2 Peer coaching programme, which ran over 12 weeks, was facilitated by Dr Will Medd and Jeff Gill to develop coaching skills to support personal and team development.

**Career development:** We ran a joint workshop with Manchester Academic Health Science Centre (MAHSC) to develop participants understanding of the changing regional and national research landscape and increase their understanding of the opportunities for research within MAHSC. We facilitated three workshops for NHS staff considering and subsequently preparing applications for the NIHR/CNO Clinical Academic Doctoral Training Scheme. Over 90 people have completed an NIHR Masters in Clinical Research within the North West and a workshop provided the opportunity for this community to come together to focus on their future career development.

**Leadership development:** Two workshops were delivered for R&D managers to develop skills in facilitation and strategic networking. A workshop run in collaboration with the Centre for Professional Workforce Development, was attended by over 150 delegates with team leadership responsibility from backgrounds in psychology, pharmacy, healthcare scientists and allied health professions from 47 NHS organisations. The workshop sought to initiate a meaningful discussion on the role of leaders in the development of a culture of research and innovation within the NHS workforce.

A full report of the day is on our website

[http://www.research.northwest.nhs.uk/publication\\_list/](http://www.research.northwest.nhs.uk/publication_list/)

Following on from this event a facilitated workshop brought together key stakeholders to inform a programme of work outlined in our 2014/15 prospectus.





### ***The Catalyst Programme***

The NHS R&D Catalyst Programme is well established and recognised as a process that can drive research and innovation to address relevant problems and enable new connections between health and academia. Over this year two catalyst events have been delivered.

### ***Research in Primary Care Dentistry***

This event was co-designed and delivered in collaboration with the North West Deanery Post Graduate Dental Education Team. The catalyst process generated 24 debates on the key dental health themes including access to dental health, dental health for the frail elderly and those with dementia and children's dental health. The full report can be viewed at

<http://www.research.northwest.nhs.uk/wp-content/uploads/2014/03/Dental-Report.pdf>

Following the initial event two of the themes are being developed further: "Access to dental health services" and "Dental Care for the Elderly". The team looking at "Access" are currently taking this work forward in collaboration with the NWC CLAHRC and funding has been awarded by the NW Deanery to undertake an evaluation of a community outreach service for marginalised clients living in Greater Manchester.

The team looking at dental care for the elderly are working with a librarian to complete a review of existing literature and are working to consider what is current good practice.

### ***The Gaps in Dementia Research***

This event was co-designed with colleagues from academia and patient organisations and was introduced by Professor Alistair Burns, National Clinical Director for Dementia in England, and Anne Johnson, a retired nurse diagnosed with dementia 8 years ago. Through the catalyst process the 72 delegates generated 26 debates on dementia themes. The full report can be viewed at

<http://www.research.northwest.nhs.uk/wp-content/uploads/2014/05/Identifying-the-gaps-in-dementia-research.pdf>

The event was also recorded using visual minutes which can be viewed on our website.

A review of the outcomes of these debates will take place in April/May 2014.



## Let's Talk Research

A developing programme of work is focussed on exploring how collaboration between researchers and arts based organisations can improve the way in which research is communicated and made more accessible. This year, we supported 3 academic teams to work with professional comedians from the Big Comedy Shop to produce a film communicating a central message from their research.



- The Centre for Suicide Prevention, University of Manchester communicated how a 24 hour crisis team can reduce the risk of suicide.
- Echo Yeung from Liverpool John Moore's University and colleagues from the Chinese community explored the stigma attached to mental illness in the Chinese community.
- Lee Graves from Liverpool John Moore's and colleagues from the Physical Activity Exchange research group developed a message relating to the prevention of obesity.

Films from all three workshops will be available on the R&D website and on our YouTube Channel.

## European Work

In 2013/14 NHS R&D NW worked in close partnership with the North of England EU Health Partnership (NEEHP) and the NHS EU Office. A workshop in September 2013, developed in partnership with NEEHP, provided a forum for academics from a number of HEIs to increase their understanding on how to engage with EU projects.

A workshop attended by Senior Academics and NHS healthcare professionals in December 2013, was held in partnership with the NHS EU office to launch Horizon 2020 in the North West of England. This is the new EU Research and Innovation programme with nearly €80 billion of funding available over 7 years (2014 to 2020).



Also in December 2013, Stuart Eglin spoke at the EUREGHA conference in Brussels about how Inter-Regional Agreements can enable collaborative working across the EU and how Catalyst events can promote collaboration. This paper can be viewed at

<http://www.research.northwest.nhs.uk/wp-content/uploads/2013/11/Governance-of-Research-for-Regional-Health-Strategies-Report.pdf>

NHS R&D NW has also been negotiating a new Inter-Regional Agreement with the region of Tuscany.



## Creative Learning Incubator

The Creative Learning Incubator brings together people from the world of the arts with people from the research community to enrich the learning strand in the development of the R&D community, enabling leaders and practitioners to be more creative and more effective.

Over the last year the team have explored some basic principles of mindfulness techniques and how these can be incorporated into daily life and enhance both personal and work performance and interpersonal communication. We participated in a poetry reading workshop led by the Reader Organisation to consider the growing evidence base relating to how shared reading can make a difference to people of all ages and background.

We participated in two workshops with colleagues from the NHS to explore how animation, map making, comic strips and puppets can be used to communicate key research methods to a variety of audiences.



## Communications

We reviewed all of our communications at the beginning of the year and as a result our new website went live in autumn 2013: <http://www.research.northwest.nhs.uk/>

The team are prolific tweeters, join us at @NHSNWRD to keep up to date and we also have a LinkedIn account and some specialist LinkedIn groups.

Many of our events are filmed and some of our workshops have specially commissioned films which can be viewed on our YouTube channel at <http://www.youtube.com/user/NHSNorthRandD>







### [North West People in Research Forum](#)

The North West People in Research Forum, a membership organisation, is hosted by NHS R&D NW and works across the North West region to support public involvement and engagement in health and social care research and currently has over 400 members and 50 organisational members.

The Forum aims to:

- Support patients and members of the public who are, or wish to become, involved in health research.
- Support researchers to involve and engage patients and the public in all stages of research.
- Share learning about public involvement and engagement research, form links between researchers and the public.

Examples of the Forum's work during 2013-2014 include

- Informing the development of public involvement and engagement with research across the North West region.
- Collaborating with local research networks and organisations.
- A report mapping patient, carer and public involvement and engagement in the North West Clinical Research Networks was produced for the NW Coast CLRN on behalf of the Forum by TwoCan Associates.
- Collecting and sharing examples of good practice.

### [Signposting and support](#)

The Forum continues to provide information and support to researchers and the public by:

- Sharing information about developments in public involvement and engagement in research.
- Publicising opportunities for members of the public to take part in research projects and initiatives.
- Giving advice to researchers about how to involve members of the public in research and signposting them to individuals and organisations who may wish to be active participants in research.
- Giving advice to members of the public about taking part in research.



### Training and events

A one day workshop on patient and public involvement in research for researchers, **Experience Matters**, was held in May 2013. This workshop aimed to help researchers to build their understanding of patient and public involvement in research, to start involving patients and public in their research, or to develop their involvement activities, and to learn from other participants about what might work in specific contexts.

**Building Research Partnerships** training workshops were held in partnership with Macmillan and Cumbria and Lancashire Comprehensive Local Research Network. The Forum worked with Macmillan to help pilot these workshops and have supported a number of workshops. The workshops provide an understanding of what it means to be involved in research and how patients, carers and the public can be involved at each stage, including the design stage. The workshops also provide a networking opportunity for members of the public and researchers.

The development of an **online training information resource** to provide details of training available to support public involvement and engagement in research and highlight gaps in training.

Salford Royal Foundation NHS Trust R&D team and the Forum organised an event, **Patient and Public Involvement in Research: Practice sharing and innovations** with the aim of building new partnerships and strengthening existing ones. The event provided an opportunity to share experiences, best practice and explore innovative ways that PE/PPI in research can be delivered.

**The Value of Working Together in Health Research** event brought together members of the public, patients, carers, health professionals and researchers to explore the benefits of working together in health research and the different values people bring to this process. The event aimed to identify ways to improve the process of working together in health research across the North West.

Forum representatives regularly attend regional and national events to (i) raise the importance of public involvement and engagement in research and (ii) to highlight how the Forum can support public involvement and engagement in research.

Significant progress has been made with securing funding for the Forum with funding agreed from the NW Research Design Service, Patient Safety Research Centre – and funding being negotiated with the two Local Comprehensive Research Networks in the region.



### [Looking forward to 2014 /2015](#)

#### [Ambition for 2014/15](#)

Looking ahead to 2014/15 the Team proposes the following portfolio of interventions aimed at supporting the R&D workforce specifically; promoting the third domain in the HEE Educational Outcomes Framework (a flexible workforce receptive to research and innovation); and responding to the detail set out in the 2013 Business Plans of NWC AHSN and GM AHSN.

#### [Let's Talk Research Conference September 2014](#)

Preparations and planning are underway for the first Annual Conference on 24<sup>th</sup> & 25<sup>th</sup> September 2014 at the Bolton Whites Hotel, Bolton.

The following Keynote Speakers are confirmed – Professor Margaret Whitehead (University of Liverpool and WHO Collaborating Centre for Policy Research on Social Determinants of Health), Dr Nicki Latham (Health Education England) and Clare Matterson (Wellcome Trust).

#### [Releasing Potential Programme](#)

- The launch of the NHS NW Post-doctoral network and 3 network meetings
- Pilot and Evaluation of the 'Releasing Research and Innovation Potential in Clinical Teams' programme
- NHS NW Early Career Research workshop on personal effectiveness
- NHS NW 'Starting your research career' conference
- Workshops to support applicants to the NIHR CAT Fellowships
- Continuation of the Peer 2 Peer coaching
- Development of web portal/resources to support Early Career Researchers
- Facilitation of LinkedIn group for Early Career Researchers

#### [Catalyst Programme](#)

- July 2014 Catalyst Event on leading cultures of research to be held at the Bolton Whites Hotel.
- December 2014 Catalyst event on patient and public involvement in research; venue to be confirmed
- Current negotiations on-going around a possible catalyst event for research in primary Care.
- Early discussions on possible event on long term conditions in children



### Catalyst follow on events

**Research in Primary Care Dentistry;** Supervision of a research project with a Manchester based dental practice to evaluate a community outreach service for hard to reach populations;

- On-going work looking at access to dental services particularly EDS supported by Professor Rumona Dickson from the Liverpool Reviews and Implementation Group.
- Development of a half day event to look at Dental Care for the frail elderly in the North West.
- *Dementia*; Review of convenors questions May 2014 with a proposed follow up event July/September 2014.

### EU Programme

- Completion of a full scoping exercise to consider the amount of interest/knowledge and engagement with the EU funding programme Horizon 2020. Scoping to be conducted by Karen Zaman and completed with full report by September 2014.
- To sign off the inter-regional agreement with Tuscany and develop an agreed programme of work.
- Re-establish connections with new leaders in health and research in Catalonia and pursue a programme of work.
- Develop connections with EUREGHA.
- Explore new working relationship with Toni Dedeu in his new role as the Director of Research and Knowledge exchange with the Digital Health Institute in Edinburgh.

### Creative Learning Incubator

- To complete a series of Podcasts.
- To explore the further use of Comic Strips, Map making and Animation within our stakeholder groups.
- To pursue new ways of evaluating programmes of work: ***Beyond measurement.***
- To consider a writer in residence/creative writer to develop a themed narrative of the work of the team.

### Social and Web based media

The NHS R&D NW has a remit to support and research capability and capacity building within the NHS and as part of this function we need to ensure that people accessing our website can access up to date and relevant information. Therefore we are developing a portal on our website to ensure that our website becomes the site of choice for people seeking information.



### Summary

The NHS Research and Development North West team will continue the successful work of 2013/14 by continuing to:-

- Build R&D capacity throughout the full range of NHS organisations.
- Make and support connections across the boundaries of organisations and existing networks.
- Work collaboratively to facilitate the generation of ideas and research questions across multiple networks.
- Build the profile of patient and public involvement in R&D.

The team is keen to work with a number of different partners and collaborators. If you have a new or innovative idea then please contact us:-

<http://www.research.northwest.nhs.uk>

Twitter: @NHSNWRD

LinkedIn: NHS North West Research and Development

### Acknowledgements

Our thanks go to our hosts at Salford Royal NHS Foundation Trust for supporting us through the transition from the SHA to being a devolved hosted function. Our thanks also go to our key stakeholder Health Education Northwest for their on-going commitment and investment in the work that we do. Thanks to our associates for all their hard work and everyone who has supported our work in 2013/14.



**Health Education North West**



**NHS R&D North West**  
**11<sup>th</sup> floor, 3 Piccadilly Place**  
**Manchester M1 3BN**  
**Tel: 0161 242 1337**  
**[www.research.northwest.nhs.uk](http://www.research.northwest.nhs.uk)**

